

milwaukee
Cylinder

Specials are Our Standard



MC DuroTech™-Series

**Durable Air Driven
Power Unit Technology
for High Cycle Applications**



Models MAP07 and MAP15

- ▶ Simple Operation
- ▶ Highly Durable
- ▶ Built for High Use Applications
- ▶ High Flow Rate
- ▶ User Adjustable Outlet Pressure
- ▶ Automatically Maintains Pressure
- ▶ 2 Different Output Pressure Models
- ▶ Includes 4 Station Manifold



Shown with Enerpac MVVD-001 Manual Valve

These heavy-duty air driven pumps are well suited for use in production environments.

Includes four-station DO3 manifold. Includes pressure-rated cover plates for operation of fewer than four stations.

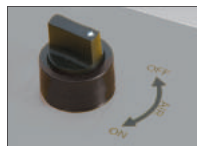
Optional P&T cross-over plate for use of a remote manifold.

INDUSTRIAL, HIGH-CYCLE, HIGH-FLOW HYDRAULIC SUPPLY IN AN ECONOMICAL AIR-POWERED UNIT

- Heavy-duty construction, including steel reservoir and protective steel shroud
- Long-life, fully serviceable air motor
- Dual pump action offers high oil capacity and smooth flow
- On-demand stall / restart operation automatically maintains system pressure
- Adjustable hydraulic pressure through built-in air filter / regulator
- Requires no air lubrication
- Reduced noise level (75dBA)
- Standard four-station DO3 manifold

KEY FEATURES

- Extremely durable pump element
- Four-station DO3 manifold with cover plates for unused stations
- Air filter / regulator with built-in air pressure gauge
- 1.8-Gallon all-metal reservoir with easy-access drain plug
- Easy-to-read oil level sight glass



Air shut-off valve



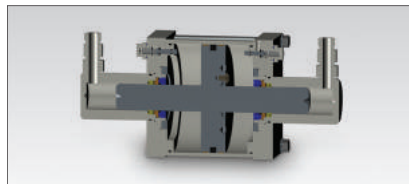
Convenient fill port



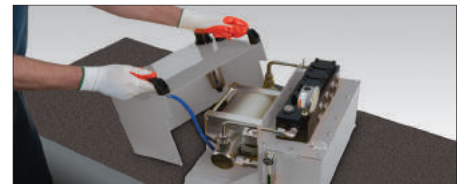
Pressure control



Air pressure gauge

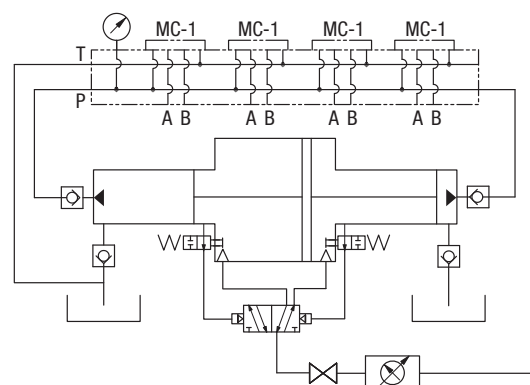


Dual pump with extremely durable element



Removable Metal Shroud

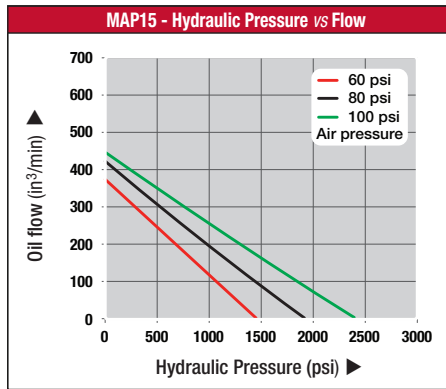
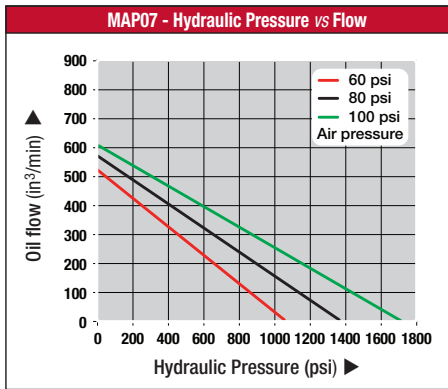
INTERNAL SCHEMATIC



Operation:

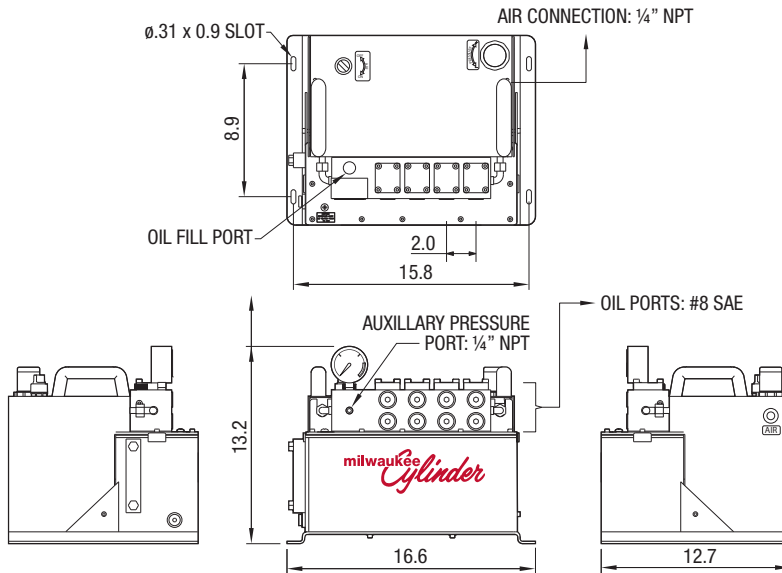
Shop air is connected to the built-in pressure regulator where the operator can adjust the air pressure, that in turn sets the maximum hydraulic oil pressure. The air is ported through a built-in shut-off valve to the air pump. With the shut-off valve open, the pump automatically turns on and off to obtain and then maintain the customer selected pressure.

OIL FLOW VS. OIL PRESSURE VS. AIR PRESSURE



NOTE: Performance is significantly diminished below 50 psi. Performance may vary compared to listed values due to seal friction, internal pressure drops and manufacturing tolerances.

PRODUCT DIMENSIONS IN INCHES



▼ PRODUCT SELECTION CHART

Model No.	Ratio	Max Rated Hydraulic Pressure ¹⁾ (psi)	Air Pressure Range (psi)	Max Hyd. Press. at 100 psi Air ²⁾ (psi)	Max Hyd. Flow at 100 psi Air ³⁾ (in ³ /min)	Max Air Consumption at 100 psi Air (scfm)	Usable Oil Capacity (in ³)	Internal Hyd. Safety Relief Valve Setting (psi)	Weight (lbs)
MAP07	16:1	1920	30-120	1595	612	24	415	2000	71
MAP15	23:1	2760	30-120	2320	465	24	415	3000	71

- 1) Based on 120 psi air pressure
- 2) At 0 hydraulic flow
- 3) At 0 psi hydraulic pressure
- 4) Available Cross Over Cover Plate to convert A&B outlet ports to P&T for use with remote valves
- 5) Pump element and repair kits are available
- 6) Valve manifold: 4 station DO3
- 7) Comes with 4 Cover Plates to isolate unused valve stations
- 8) Air relief valve set at 145 psi



Oil Flow:
612-465 in³/min*

Pressure:
1595-2320 psi*

Sound Level:
75 dBA*

Air:
Max 24 scfm*

Reservoir:
1.8 gallons

Ratios:
16:1, 23:1

* @ 100 psi air

Milwaukee Cylinder can offer any type of DO3 valve configuration to support your needs. Example products include:

These heavy-duty air driven pumps are well suited for use in production environments.

Includes four-station DO3 manifold. Includes pressure-rated cover plates for operation of fewer than four stations.

Optional P&T cross-over plate for use of a remote manifold.



5877 S Pennsylvania Avenue
Cudahy, Wisconsin 53110-2456 USA



MILWAUKEE CYLINDER offers:

- **SPECIALS / CUSTOM PRODUCTS**
- **HYDRAULIC CYLINDERS**
- **LOW PRESSURE HYDRAULIC CYLINDERS**
- **PNEUMATIC CYLINDERS**
- **ALUMINUM CYLINDERS**
- **HYDRAULIC PNEUMATIC DEVICES**
 - **PRESSURE BOOSTERS**
 - **AIR OIL TANKS**
 - **ACCUMULATORS**
- **CYLINDER ACCESSORIES**
 - **LINEAR ALIGNMENT TOOLS**
 - **AMLOK® ROD CLAMP**
 - **SPHERICAL ROD ACCESSORIES**
- **INDUSTRIAL MANIPULATORS**
- **POWER UNITS AND VALVES**
- **PRECISION ACTUATION**
- **TEST STANDS**

Contact Milwaukee Cylinder for your application needs.

Your *Milwaukee Cylinder* Distributor

www.milwaukeeecylinder.com • sales@milwaukeeecylinder.com
phone 414.769.9700 • fax 414.769.0157



Due to manufacturing processes and product improvements, please check website for the latest updates of products.

© 2018 Milwaukee Cylinder

Specials
are
Our
Standard